

# THE VERY LATEST IN OUR LINEUP OF EXCEPTIONAL SUPPORT & PROTECTION PRODUCTS™

## NEW! Cabinet Frame Rack (CFR) - Maximizes Overall Usable Height

Enclosures



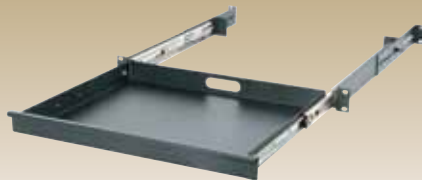
Middle Atlantic's CFR provides rackspace in entertainment systems, cabinets and similar spaces

- Low profile design maximizes usable rackspace
- Features a strong welded frame that allows for pre-loading equipment and transportation to the installation site
- Available in 406 mm and 457 mm depths with 8 to 14 space racking height
- Comes with two adjustable front to rear lacing bars for cable dressing or mounting accessories
- Upright feature offset cable tie area which keeps the rack to a slim 489 mm width
- Optional runner kits allow the rack to slide in or out of place without damaging your cabinet, credenza, etc.

16" Usable Depth	18" Usable Depth	Description	Overall Height	Usable Height
CFR-8-16	CFR-8-18	8 sp, cabinet frame rack	380 mm	356 mm
CFR-9-16	CFR-9-18	9 sp, cabinet frame rack	424 mm	400 mm
CFR-10-16	CFR-10-18	10 sp, cabinet frame rack	468 mm	445 mm
CFR-11-16	CFR-11-18	11 sp, cabinet frame rack	513 mm	489 mm
CFR-12-16	CFR-12-18	12 sp, cabinet frame rack	557 mm	533 mm
CFR-13-16	CFR-13-18	13 sp, cabinet frame rack	602 mm	578 mm
CFR-14-16	CFR-14-18	14 sp, cabinet frame rack	646 mm	622 mm
5-RS16	5-RS18	low friction runner kit		

## NEW! UD1 Utility Drawer - Space Saving and Convenient

Accessories



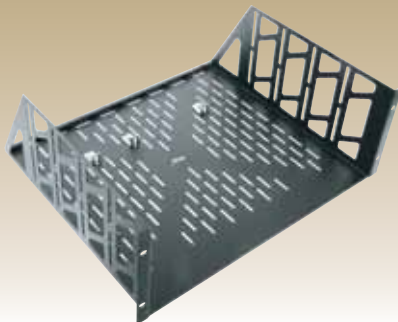
- One space drawer ideal for remote controls, equipment or user manuals
- Can be flipped over and used as a convenient one space sliding shelf

Part #	Description	Weight Capacity
UD1	44 mm (1 space)	23 kg



## NEW! UxV Vented Utility Shelf - For Superior Ventilation

Accessories



- Fully ventilated bottom and side areas for heat dissipation
- Includes 3 rear brackets to prevent components from sliding backwards
- Allows attachment of optional clamping bars to secure components

Part #	Description	Weight Capacity
U2V	2 space vented utility shelf	23 kg
U3V	3 space vented utility shelf	32 kg
U4V	4 space vented utility shelf	39 kg

# THE VERY LATEST IN OUR LINEUP OF EXCEPTIONAL SUPPORT & PROTECTION PRODUCTS™

## NEW! SFR Series - Swing Frame Rack

Wall Mount Racks



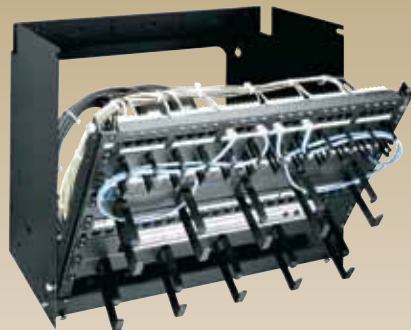
Open wall mount racks for mounting residential and small business equipment. Innovative open-back wall mount design allows swing frame rack to be mounted over existing equipment and physical obstacles (conduit, telephone equipment, water pipes, etc.)

- Rugged 45 kg weight capacity provides the greatest strength in its class
- Ships ready-to-assemble for easy storage and transport
- Abundant tie points and cable pass-throughs ease cable management
- Standard 11-gauge, 10-32 threaded rackrail with marked rackspace increments to speed equipment mounting
- Permanently lubricated bushings with a proprietary pivot prevent sag
- Durable black powder coat finish
- Innovative 90° “positive stop” design facilitates punching down while fully open
- Opens left or right

Part #	Overall Height	Racking Height	Depth	Weight Capacity
SFR-12-18	146 mm	533 mm (12 space)	457 mm	45 kg
SFR-20-18	235 mm	889 mm (20 space)	457 mm	45 kg
SFR-25-18	324 mm	1,111 mm (25 space)	457 mm	45 kg

## NEW! PPM Series - Pivoting Panel Mounts

Wall Mount Racks



The logical choice for home networking equipment connections. The PPM Series unique pivoting design provides easy rear access.

- Innovative design with 90° “positive stop” facilitates punching down while fully open
- Pivoting panel mounts are offered in 3 depths, 152 mm, 305 mm and 457 mm to provide easy access to rear of equipment
- Abundant internal tie points for cable management
- Includes 25 rack screws and hook and loop cable management fasteners
- Finished in durable black powder coat
- Optional security doors available
- Easy rear access provided by swinging rails down

Part #	Overall Height	Racking Height	Depth	Weight Capacity
PPM-2	146 mm	89 mm (2 space)	152 mm	9 kg
PPM-4	235 mm	178 mm (4 space)	152 mm	9 kg
PPM-6	324 mm	267 mm (6 space)	152 mm	14 kg
PPM-6-12	324 mm	267 mm (6 space)	305 mm	18 kg
PPM-8-12	413 mm	356 mm (8 space)	305 mm	27 kg
PPM-8-18	413 mm	356 mm (8 space)	457 mm	27 kg

# THE VERY LATEST IN OUR LINEUP OF EXCEPTIONAL SUPPORT & PROTECTION PRODUCTS™

## NEW! SLIM 5 SERIES - Equipment Rack Enclosure

Enclosures



- Enhanced rack design provides additional cable and thermal management functionality
- NEW runner kit available to easily slide Slim 5 Series in and out of credenzas and lecterns, protecting millwork
- NEW thermolaminate finish sides and tops with smoothly rounded corners, edge and sculpted areas for enhanced aesthetics
- Wide range of cabinet options make racks adaptable to a multitude of installation environments

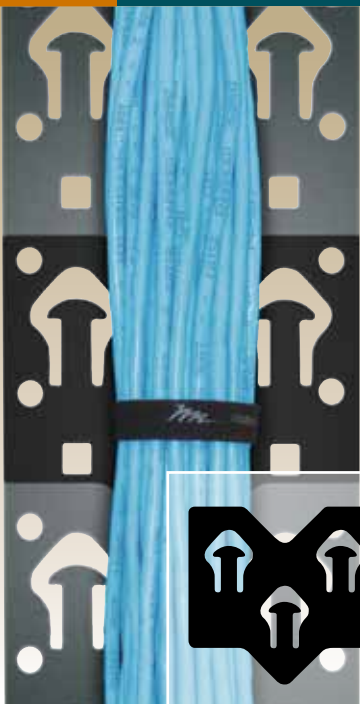
Part #	Overall Height	Racking Height	Depth
TSP-5-43	TSP-5-43-26	1,911 mm (43 space)	2,007 mm
TSP-5-37	TSP-5-37-26	1,645 mm (37 space)	1,740 mm
TSP-5-29	TSP-5-29-26	1,289 mm (29 space)	1,384 mm
TSP-5-21	TSP-5-21-26	933 mm (21 space)	1,029 mm
TSP-5-14	TSP-5-14-26	622 mm (14 space)	718 mm
TSP-5-8	TSP-5-8-26	356 mm (8 space)	451 mm



Runner Kit	
Part #	Fits
5-RS20	508 mm deep models
5-RS26	680 mm deep models

## NEW! Anti-Slip Cable Pad - Helps Maintain High Cable Performance Levels

Cable Management

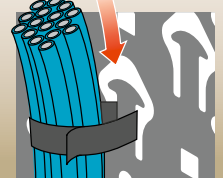


Introducing the Anti-Slip Cable Pad with a patented material that mounts to OWP Series Lace. With proper use, these pads help maintain high bandwidth signal system performance levels. By reducing the tendency for vertical cable bundles to slip, these pads reduce the need to overtighten cable ties, which in turn helps ensure that sensitive cables operate at their high designed performance level.

- Helps cable stay in place and not slip at tie points.
- Reduces risk of over tightening of tie points to ensure proper cable performance
- Patented high tack polymer material gives a permanent high friction surface
- Easily washed to ensure dust or other debris does not affect performance

Part #	Size	Color	Description
ASP-OWP	89 mm high x 114 mm wide anti-slip pad .82 mm thick adhesive back material	black	die cut pattern to work on LACE-xxOWP (4 pack)
ASP-OWP-6	89 mm high x 114 mm wide anti-slip pad .82 mm thick adhesive back material	black	die cut pattern to work on LACE-xxOWP (24 pack)

No need to fish in cable ties & straps - just slide them on!



# THE VERY LATEST IN OUR LINEUP OF EXCEPTIONAL SUPPORT & PROTECTION PRODUCTS™

## NEW! RK/BRK/OBRK/MBRK Series - Laminate Racks

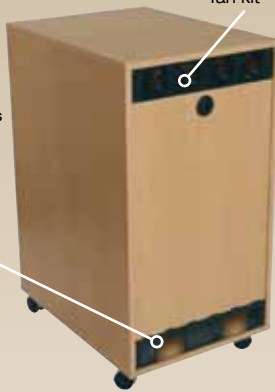
Enclosures



**MBRK**  
maple finish  
now available

locking/latching panel tips out for easy access and provides quiet cooling, cable entry and security

integrated rear cable entry panel



optional fan kit



**RK-GD20**  
aesthetic smoked tempered glass door available for BRK/OBRK/MBRK racks

**IDCFANKIT-4**  
fan kit for BRK



Elegant! Cost-effective! Well-suited for versatile uses in visible locations – in a boardroom, restaurant, video suite, studio or conference.

- Optional attractive rear panel can be configured for quiet, passive or active cooling
- New wood grain finishes are available in maple, oak, and black
- New four depths available from 406 mm to 711 mm

These deeper racks allow abundant space for deeper products, and with included rear rails on 559 mm and 711 mm deep racks, they rear support for convenient 4 point mounting. Added depth also provides space for efficient cable management, giving ample room to dress cabling and service equipment. Increased weight capacity of larger size racks, with unique low profile bracing system. Heavy-duty caster set now available for loads up to 113 kg.

Part #	Overall Height	Racking Height	Overall Depth	Weight Capacity
RK2	126 mm	89 mm	404 mm	91 kg
RK4	215 mm	178 mm	404 mm	91 kg
RK6	304 mm	267 mm	404 mm	91 kg
RK8	393 mm	356 mm	404 mm	91 kg
RK10	492 mm	445 mm	404 mm	91 kg
RK12	571 mm	533 mm	404 mm	91 kg
RK14	660 mm	622 mm	404 mm	91 kg
RK16	749 mm	711 mm	404 mm	91 kg
RK20	927 mm	889 mm	404 mm	91 kg
BRK6	304 mm	267 mm	455 mm	91 kg
(O)BRK8	393mm	356 mm	455 mm	91 kg
BRK10	492 mm	445 mm	455 mm	91 kg
(O)BRK12	571 mm	533 mm	455 mm	91 kg
BRK14	660 mm	622 mm	455 mm	91 kg
(O)BRK16	749 mm	711 mm	455 mm	91 kg
(O)BRK20	927 mm	889 mm	455 mm	91 kg
(M)BRK8-22	397 mm	356 mm	559 mm	91 kg
(M)BRK12-22	575 mm	533 mm	559 mm	91 kg
(M)BRK16-22	753 mm	711 mm	559 mm	91 kg
(M)BRK20-22	930 mm	889 mm	559 mm	113 kg
(M)BRK28-22	1286 mm	1245 mm	559 mm	113 kg
BRK8-28	397 mm	356 mm	711 mm	91 kg
(M)BRK12-28	575 mm	533 mm	711 mm	91 kg
(M)BRK16-28	753 mm	711 mm	711 mm	91 kg
(M)BRK20-28	930 mm	889 mm	711 mm	113 kg
(M)BRK28-28	1286 mm	1245 mm	711 mm	113 kg

Part #	Color
RK	Black
BRK	Black
SRK	Black

Part #	Color
OBRK	Oak
MBRK	Maple

Part #	Rear Access Panel Height
RK-RAP8(-MP*)	172 mm
RK-RAP12(-MP*)	350 mm
RK-RAP16(-MP*)	528 mm
RK-RAP20(-MP*)	706 mm
RK-RAP28(-MP*)	1062 mm

Part #	Description
IDCFANKIT-4	4 int'l BRK fankit 4 fans 100 cfm